



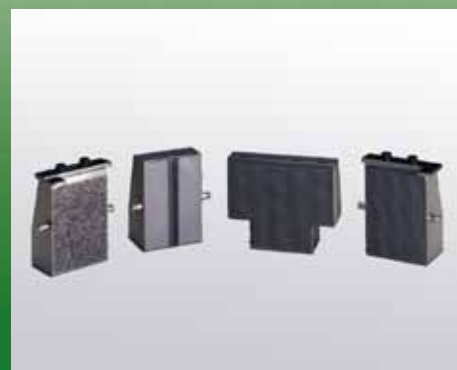
Hydraulic Grips



Grip Reference 01036010



Grip Reference 01036001



Grip Faces

Description: Side loading hydraulic wedge grips.

Used On: High force electromechanical test frames and hydraulic test frames

Applications: Metal, and other high force specimens.

Specifications:
 Max Capacity 120kN/30klbf
 Standard Wedge Width* 45mm/1.75in
 Length Each: 180mm/7.4in
 Weight Each: 30kg/67lb
 Temperature Limits -40 to 175°C
 Required Hydraulic Pressure 21MPa/3kpsi

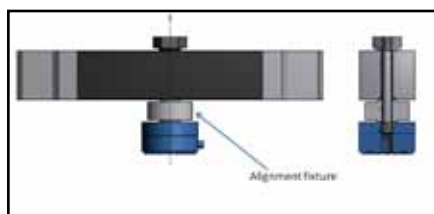
Required Accessories:

Hydraulic pumping unit
 Grip Faces
 Alignment Fixtures

* Alternate wedge widths available

Description: Hydraulic pumping unit with grip control for use with the 120kN grips (ref. 01036010).

Specifications:
 Max Pressure 21MPa/3kpsi
 Min. Pressure 0.7MPa / 100psi
 Pressure Stability: +/-100psi
 Weight: 76kg/170 lb
 Temperature Range -40 to 177 °C



**Alignment Fixture
Grip Reference 01036003**

Description: Alignment fixture allows alignment adjustment to eliminate loading inconsistencies and inaccuracies that frequently occur during sample loading.

Specifications:
 Max Capacity 120kN/30klbf

Description: Wedge grip faces used in the side loading hydraulic wedge grip body. The wedge grips are available in a variety of different shapes that best match the specimen profile.

Specifications:
Flat Wedge Specimens
 Specimen Thickness 0-7.6mm / 0 - 0.3 in
 or 7.1-14.2 mm / 0.28-0.56 in
 or 11.7-19.1mm / 0.46-0.75 in

Narrow Wedge Set
 Wedge Width 44.5 mm / 1.75 in

Wide Wedge Set
 Wedge Width 76.2 mm / 3.00 in

Round Wedge Specimens
 Specimen Diameter 12,15,20mm
 0.5,0.75,1.0in

Vee Wedge Specimens
 Specimen Diameter 5.8-10.2 mm / 0.23-0.40 in
 10.9-12.8mm / 0.43-0.5 in



Grip Reference 01036030

Description: Side loading hydraulic wedge grips.

Used On: High force electromechanical test frames and hydraulic test frames

Applications: Metal, and other high force specimens.

Specifications:

Max Capacity 300kN/60klbf
 Standard Wedge Width* 50 mm / 2 in
 Length Each: 180mm/7.4in
 Weight Each: 77kg/170lb
 Temperature Limits -40 to 175°C
 Required Hydraulic Pressure 70MPa/10kpsi

Required Accessories:

Hydraulic pumping unit
 Grip Faces
 Alignment Fixtures

* Alternate wedge widths available

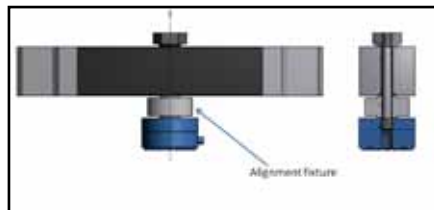


Grip Reference 01036002

Description: Hydraulic pumping unit with grip control for use with the 300kN grips (ref. 01036030).

Specifications:

Max Pressure 70MPa/10kpsi
 Min. Pressure 10MPa / 1.5kpsi
 Pressure Stability: +/-100psi
 Weight: 76kg/170 lb
 Temperature Range -40 to 177 °C

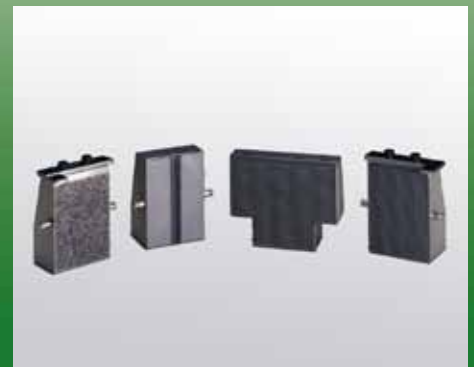


**Alignment Fixture
 Grip Reference 01036004**

Description: Alignment fixture allows alignment adjustment to eliminate loading inconsistencies and inaccuracies that frequently occur during sample loading.

Specifications:

Max Capacity 300kN/60klbf



Grip Faces

Description: Wedge grip faces used in the side loading hydraulic wedge grip body. The wedge grips are available in a variety of different shapes that best match the specimen profile.

Specifications:

Flat Wedge Specimens

Specimen Thickness 1-11.9 mm / 0.04 - 0.47 in
 or 6.1-17 mm / 0.24-0.67 in
 or 15 - 25.9 mm / 0.59 -1.02 in

Narrow Wedge Set

Wedge Width 50.8 mm / 2 in

Wide Wedge Set

Wedge Width 101.6 mm / 4.00 in

Round Wedge Specimens

Specimen Diameter 15, 20, 30 mm / 0.5, 1.0 in

Vee Wedge Specimens

Specimen Diameter 6.4 - 10.2 mm / 0.25 - 0.4 in
 10.7-16.8 mm / 0.42-0.66 in
 16.8-20 mm / 0.56-0.79 in



1065 Easton Road
 Horsham, PA 19044 USA
 T:+1(215) 675-7100 F: +1 (215) 441-0899

info@TiniusOlsen.com
 www.TiniusOlsen.com
 TheTestingTimes.blogspot.com

6 Perrywood Business Park
 Honeycrook Lane, Salfords
 Redhill, Surrey RH1 5DZ England
 T:+44(0)1737 765001 F:+44(0)1737 764768

J3 SDF, NSEZ
 Noida Phase 2
 U.P. 201305, India

Contact Your Local Representative: